



ASHOK LEYLAND

GURU 715

4x4 2.5 TON

TROOP CARRIER

PRODUCT DATA SHEET

DIMENSIONS (mm)

Wheel Base	3300 mm
Overall Length	5920 mm
Overall Height	2900 mm
Overall Width	2250 mm
Ground Clearance	315 mm
Angle of Approach/Departure	30° / 30°

WEIGHTS (kg)

Unladen	3650 kg
Laden	8250 kg
Payload	2500 kg

PERFORMANCE

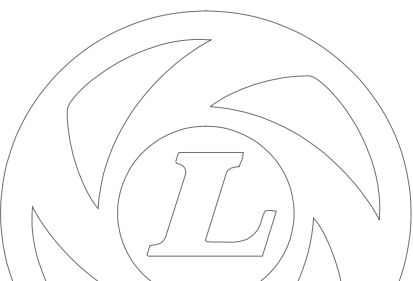
Max. Powered Speed	100 kmph
Max. Gradeability	30°
Min. Turning Circle Diameter	15m
Side Slope Stability	15°

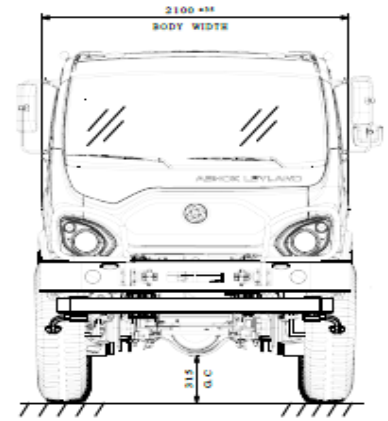
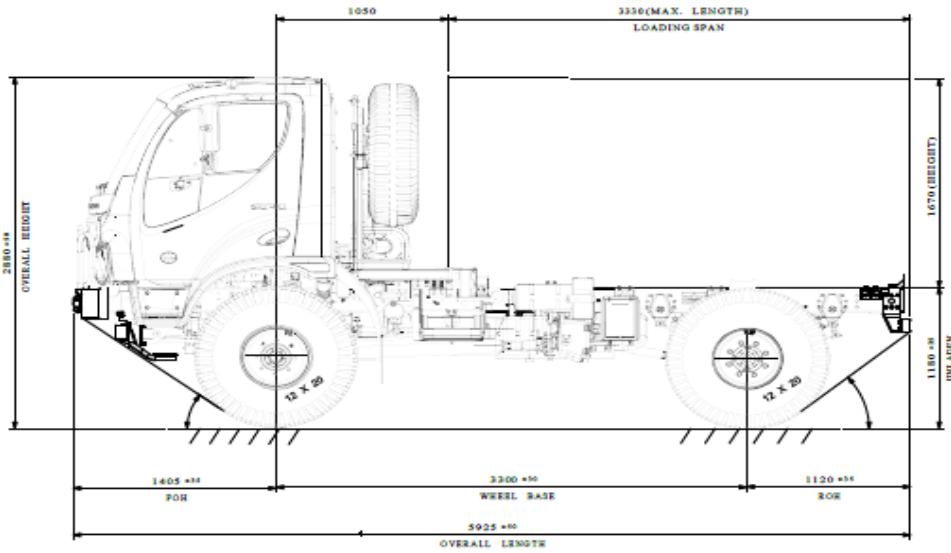
CONFIGURATION

Drive	RHD
Transmission	Manual

ENGINE

Type	6 cyl BS III iL-Diesel 5.8 L (Disp)
------	--



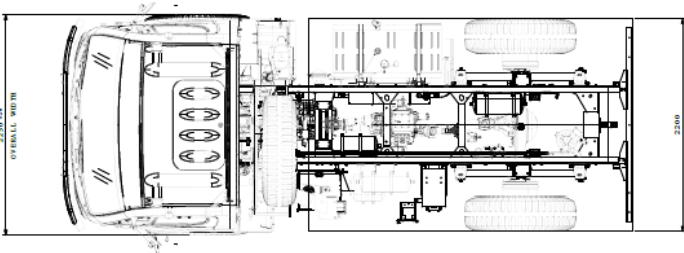


PRODUCT SPECIFICATION

ENGINE

Power	135 kW at 2400 rpm
Torque	670 Nm @ 1300 – 1400 rpm
Fuel Tank Capacity	210 Litres

CLUTCH



GEAR BOX

Type	Manual 6F + 1R
------	----------------

TRANSFER CASE

Type	Twin speed
------	------------

AXLES

Type	Fully floating single speed with lock
------	---------------------------------------

SUSPENSION

Type	Semi-Elliptical Multi-Leaf
------	----------------------------

STEERING

Type	Power Steering
------	----------------

BRAKES

Type	Full air brakes
------	-----------------

ELECTRICAL SYSTEM

System voltage	24V
Batteries	110AH

WHEELS & TYRES

Tyre Size	12.00 R 20"
-----------	-------------

CAB

Type	Day Cab
------	---------

Note: Ashok Leyland Ltd. has a policy of continual product improvement. The specifications / images shown here are indicative and are subject to change without prior notice.